

F I R S T
L I G H T

10

FLOORS 09 – 28

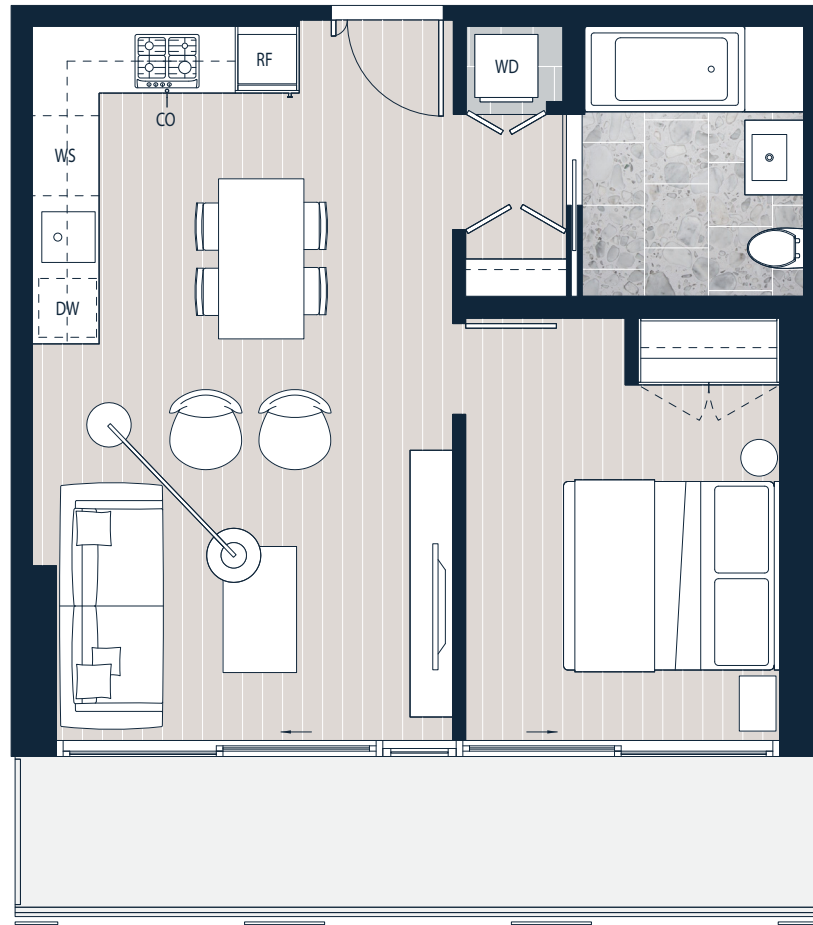
2110, 2310, 2410, 2710

1 Bedroom - Accessible Plan

Total Area 711 sf

Interior 586 sf

Exterior 125 sf



Aluminum Glass Railing with Translucent Glass Panels (*)



Virginia Street

3rd Avenue

Levels 09 - 28



* PLEASE NOTE BALCONY CONDITIONS MAY VARY BY FLOOR LEVEL, PLEASE SPEAK TO A FIRST LIGHT SALES REPRESENTATIVE FOR FURTHER DETAILS.

INTERIOR SQUARE FOOTAGE IS COMBINED WITH BALCONY SQUARE FOOTAGE AND INCLUDED IN THE TOTAL ADVERTISED SQUARE FOOTAGE OF THE HOME. SQUARE FOOTAGE IS APPROXIMATE ONLY, MAY VARY FROM THE ACTUAL UNIT AS CONSTRUCTED. EXTERIOR WALLS, GLAZING, BALCONY FASCIA AND GUARDRAIL PATTERNING ARE APPROXIMATE AND VARY DEPENDING ON THE HOME. DIMENSIONS, SIZES, SPECIFICATIONS, LAYOUTS AND MATERIALS ARE APPROXIMATE ONLY, NEED NOT BE BUILT AS DEPICTED, AND SUBJECT TO CHANGE WITHOUT NOTICE. DEPICTIONS OF FURNITURE AND OTHER PERSONAL PROPERTY ARE FOR ILLUSTRATION PURPOSES ONLY AND WILL NOT BE INCLUDED WITH A HOME. PLEASE ASK SALES REPRESENTATIVE FOR DETAILS. E. & O.E.

